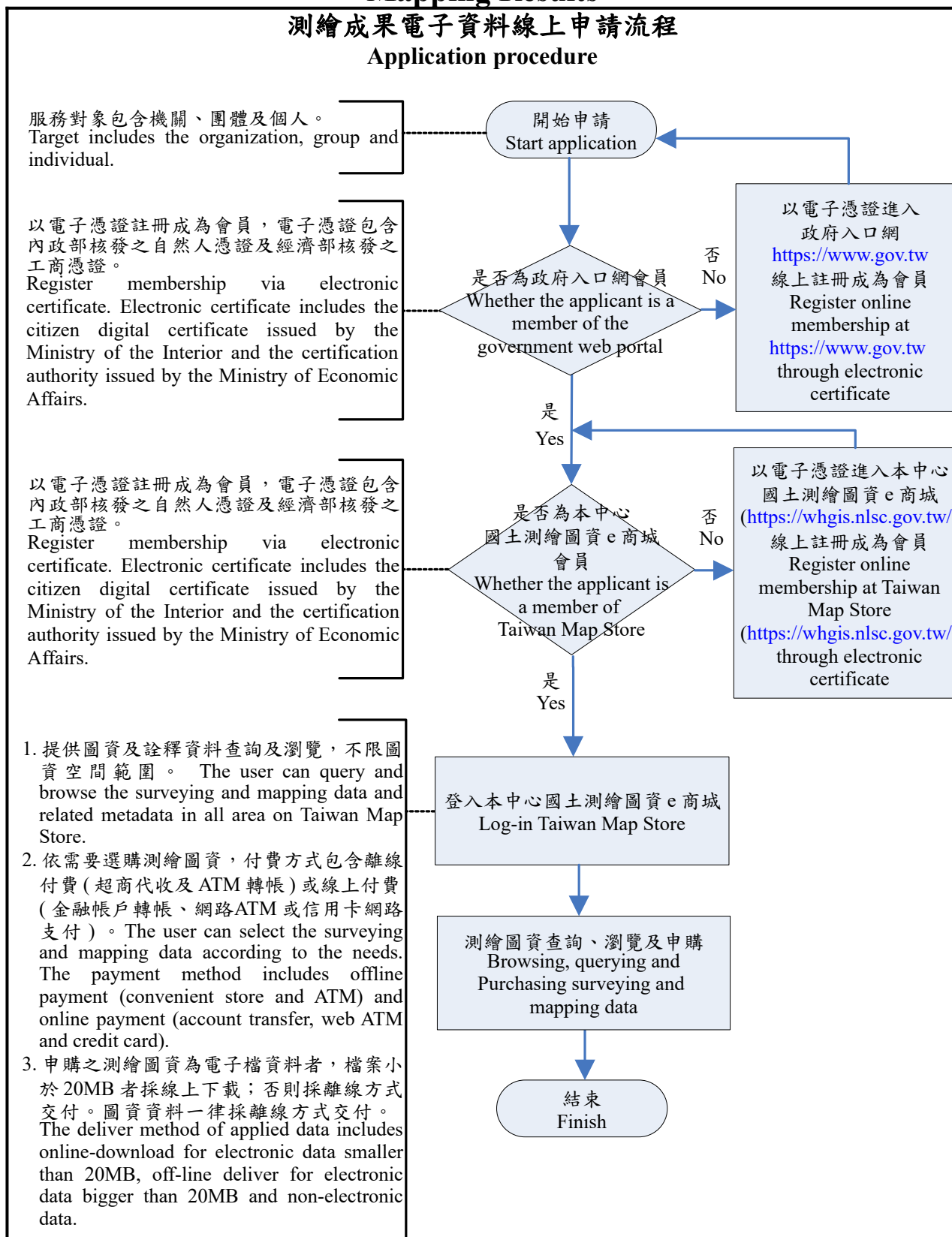


## 測繪成果電子資料線上申請流程 Online Application Procedure of Computerized Surveying and Mapping Results



### **注意事項 Important notes**

- 系統以全日開放為原則，倘因系統維護或因應突發狀況需要，將縮短或停止開放，並事前或臨時通告，使用者不得據此要求提供任何形式之損害賠償。The system is in principle operated for 24 hours. However, in the event that the operation of the system is suspended or shut down due to system maintenance or emergency situation with prior or temporary notice of such interruption of operation, no user may claim for compensation of any form on the ground of interruption of operation.
- 系統以電子憑證進行登入認證，本中心不負電子憑證遺失或冒用等之損害賠償。Where the system is accessed via electronic certificate log-in, the NLSC is not in any way liable for any damages arising from the loss or identity theft of such electronic certificate.
- 系統圖資經坐標轉換等處理程序，與原始圖資存有差異，其套疊結果僅供了解空間相對位置之參考，涉及土地實際權利界址者，應以地政事務所鑑界成果為準。Map and data which undergo coordinate transformation will be different from the original maps and data. The overlaying results are only for reference of relative spatial positions. To determine the right over the actual boundary of land shall be based on the results of land boundaries supplied by the land office.