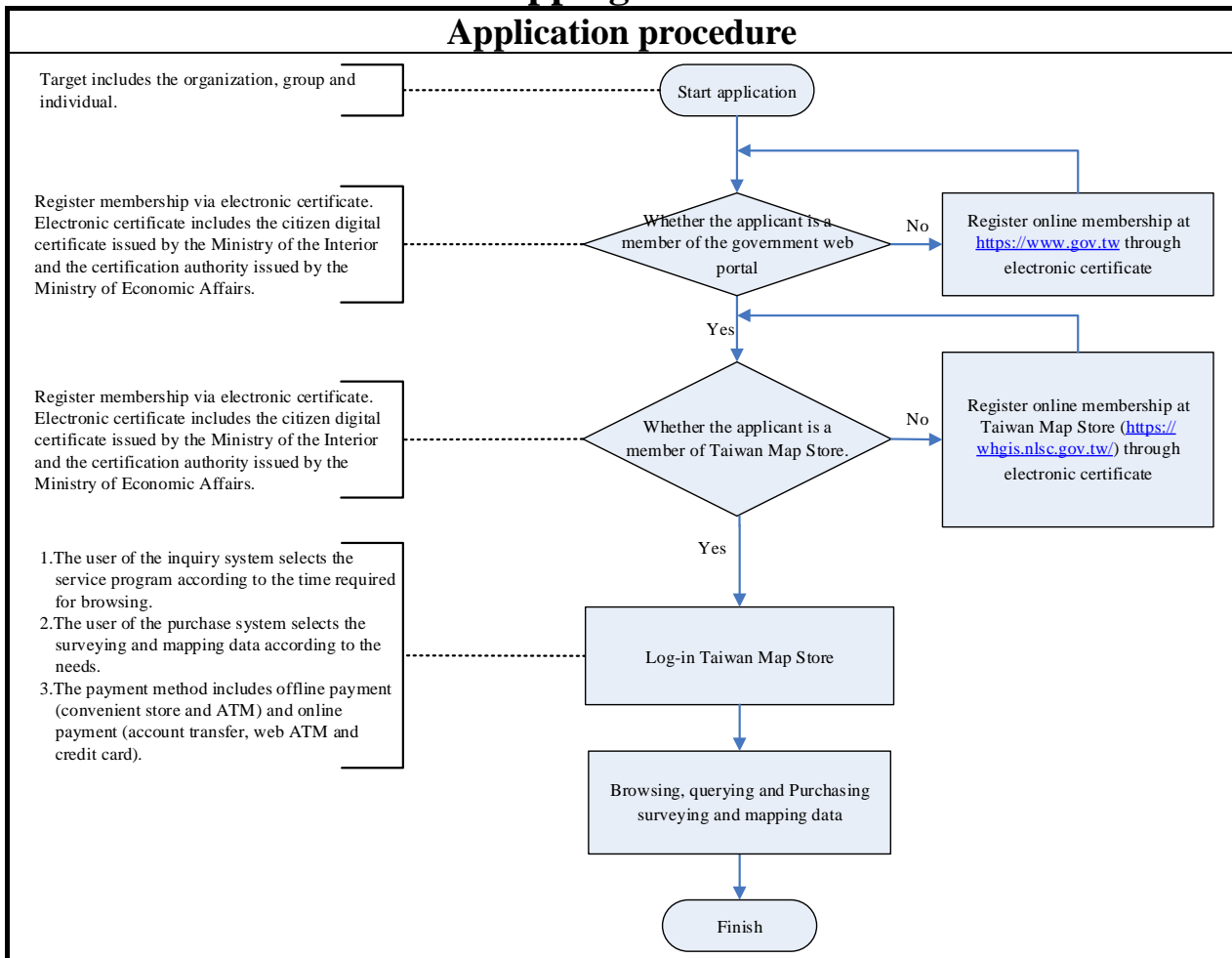


Attachment 2

Online Application Procedure of Computerized Surveying and Mapping Results



Important notes

1. The system is in principle operated for 24 hours. However, in the event that the operation of the system is suspended or shut down due to system maintenance or emergency situation with prior or temporary notice of such interruption of operation, no user may claim for compensation of any form on the ground of interruption of operation.
2. Where the system is accessed via electronic certificate log-in, the NLSC is not in any way liable for any damages arising from the loss or identity theft of such electronic certificate.
3. Map and data which undergo coordinate transformation will be different from the original maps and data. The overlaying results are only for reference of relative spatial positions. To determine the right over the actual boundary of land shall be based on the results of land boundaries supplied by the land office.