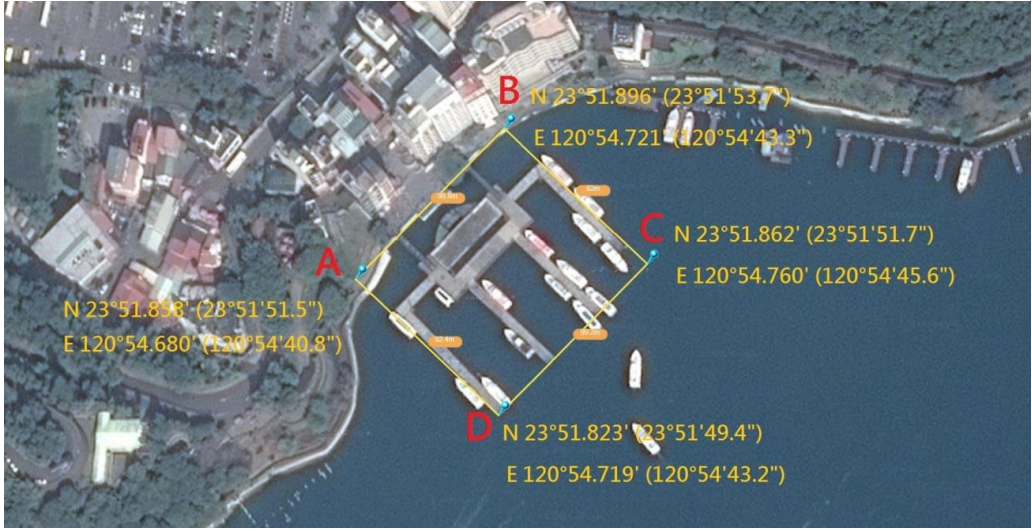


附圖

編號	圖片	範圍
1. 水社營運碼頭	 <p>The image shows an aerial view of a harbor area with buildings and a pier. A yellow quadrilateral is drawn over the water area, with vertices labeled A, B, C, and D. The coordinates for each vertex are as follows:</p> <ul style="list-style-type: none"> A 點: N 23° 51.898' (23° 51' 51.5") ; E 120° 54.680' (120° 54' 40.8") B 點: N 23° 51.896' (23° 51' 53.7") ; E 120° 54.721' (120° 54' 43.3") C 點: N 23° 51.862' (23° 51' 51.7") ; E 120° 54.760' (120° 54' 45.6") D 點: N 23° 51.823' (23° 51' 49.4") ; E 120° 54.719' (120° 54' 43.2") 	<p>A 點: N 23° 51.858' (23° 51' 51.5") ; E 120° 54.680' (120° 54' 40.8")</p> <p>B 點: N 23° 51.896' (23° 51' 53.7") ; E 120° 54.721' (120° 54' 43.3")</p> <p>C 點: N 23° 51.862' (23° 51' 51.7") ; E 120° 54.760' (120° 54' 45.6")</p> <p>D 點: N 23° 51.823' (23° 51' 49.4") ; E 120° 54.719' (120° 54' 43.2")</p>

2. 水社右側預備碼頭(梅荷園)



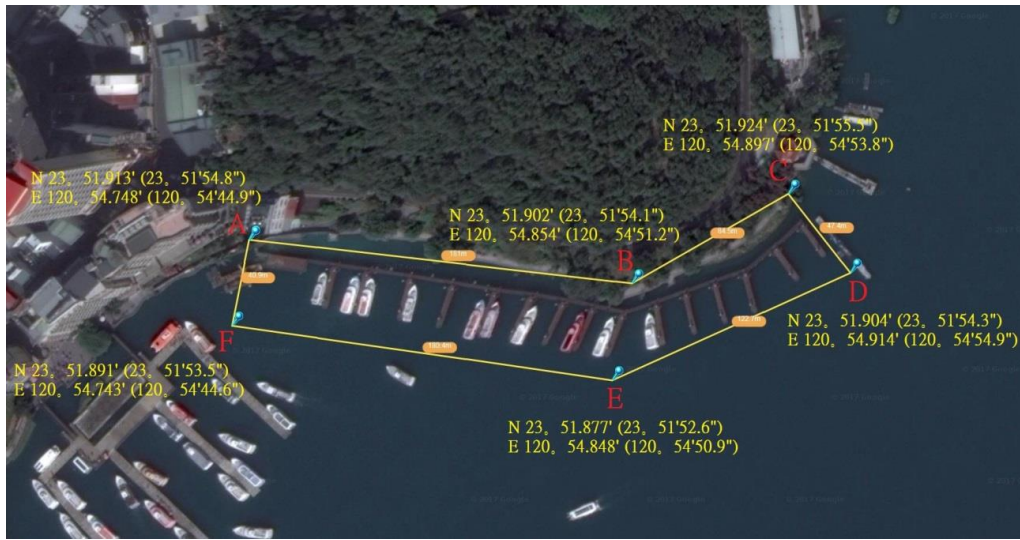
A 點 : N 23° 51.820' (23° 51'49.2") ;
E 120° 54.668' (120° 54'40.1")

B 點 : N 23° 51.802' (23° 51'48.1") ;
E 120° 54.686' (120° 54'41.1")

C 點 : N 23° 51.741' (23° 51'44.5") ;
E 120° 54.591' (120° 54'35.5")

D 點 : N 23° 51.759' (23° 51'45.5") ;
E 120° 54.574' (120° 54'34.4")

3. 水社左
側預備碼
頭
(spahome)



A 點 : N 23° 51.913' (23° 51'54.8") ;
E 120° 54.748' (120° 54'44.9")

B 點 : N 23° 51.902' (23° 51'54.1") ;
E 120° 54.854' (120° 54'51.2")

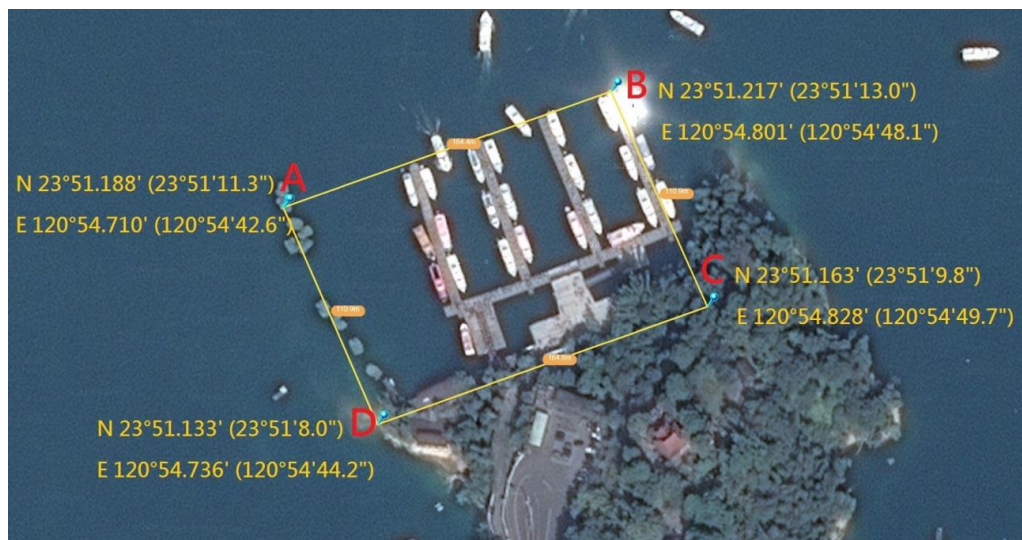
C 點 : N 23° 51.924' (23° 51'55.5") ;
E 120° 54.897' (120° 54'53.8")

D 點 : N 23° 51.904' (23° 51'54.3") ;
E 120° 54.914' (120° 54'54.9")

E 點 : N 23° 51.877' (23° 51'52.6") ;
E 120° 54.848' (120° 54'50.9")

F 點 : N 23° 51.891' (23° 51'53.5") ; E
120° 54.743' (120° 54'44.6")

4. 玄光營
運碼頭



A 點 : N 23° 51.188' (23° 51'11.3") ;
E 120° 54.710' (120° 54'42.6")

B 點 : N 23° 51.217' (23° 51'13.0") ;
E 120° 54.801' (120° 54'48.1")

C 點 : N 23° 51.163' (23° 51'9.8") ; E
120° 54.828' (120° 54'49.7")

D 點 : N 23° 51.133' (23° 51'8.0") ; E
120° 54.736' (120° 54'44.2")

5. 伊達邵
營運碼頭



A 點 : N 23° 50.980' (23° 50'58.8") ;
E 120° 55.672' (120° 55'40.3")

B 點 : N 23° 51.046' (23° 51'2.8") ; E
120° 55.774' (120° 55'46.5")

C 點 : N 23° 50.961' (23° 50'57.7") ;
E 120° 55.845' (120° 55'50.7")

D 點 : N 23° 50.893' (23° 50'53.6") ;
E 120° 55.739' (120° 55'44.3")

6.南邊湖
預備碼頭



A 點 : N 23° 50.925' (23° 50'55.5") ;
E 120° 55.662' (120° 55'39.7")

B 點 : N 23° 50.914' (23° 50'54.8") ;
E 120° 55.747' (120° 55'44.8")

C 點 : N 23° 50.868' (23° 50'52.1") ;
E 120° 55.736' (120° 55'44.2")

D 點 : N 23° 50.848' (23° 50'50.9") ;
E 120° 55.741' (120° 55'44.4")

E 點 : N 23° 50.808' (23° 50'48.5") ;
E 120° 55.717' (120° 55'43.0")

F 點 : N 23° 50.813' (23° 50'48.8") ; E
120° 55.633' (120° 55'38.0")

7.朝霧碼頭



A 點 : N 23°52.032' (23°52'1.9") ; E 120°54.924' (120°54'55.4")

B 點 : N 23°52.091' (23°52'5.5") ; E 120°54.974' (120°54'58.4")

C 點 : N 23°52.038' (23°52'2.3") ; E 120°55.049' (120°55'2.9")

D 點 : N 23°51.981' (23°51'58.9") ; E 120°54.998' (120°54'59.9")

8. 景觀平台、步道及自行車道示意圖



日月潭水庫申請許可活動區域及本風景區範圍內，本處管有之景觀平台、自行車道及步道設施。